

Data Appendix

Economic Development Plan for Kent County, Maryland

Submitted by:
Kent County Economic Development Advisory
Board
October, 2013

Kent County, Maryland

People QuickFacts	Kent County	Maryland
Population, 2012 estimate	20,191	5,884,563
Population, 2010 (April 1) estimates base	20,197	5,773,552
Population, percent change, April 1, 2010 to July 1, 2012	Z	1.9%
Population, 2010	20,197	5,773,552
Persons under 5 years, percent, 2011	4.8%	6.3%
Persons under 18 years, percent, 2011	17.4%	23.1%
Persons 65 years and over, percent, 2011	22.5%	12.5%
Female persons, percent, 2011	52.3%	51.6%

White persons, percent, 2011 (a)	81.6%	61.1%
Black persons, percent, 2011 (a)	15.5%	30.0%
American Indian and Alaska Native persons, percent, 2011 (a)	0.2%	0.5%
Asian persons, percent, 2011 (a)	1.0%	5.8%
Native Hawaiian and Other Pacific Islander persons, percent, 2011 (a)	Z	0.1%
Persons reporting two or more races, percent, 2011	1.7%	2.5%
Persons of Hispanic or Latino Origin, percent, 2011 (b)	4.5%	8.4%
White persons not Hispanic, percent, 2011	77.9%	54.4%

Living in same house 1 year & over, percent, 2007-2011	89.3%	86.4%
Foreign born persons, percent, 2007-2011	3.6%	13.5%
Language other than English spoken at home, percent age 5+, 2007-2011	6.0%	16.2%
High school graduate or higher, percent of persons age 25+, 2007-2011	85.5%	88.2%
Bachelor's degree or higher, percent of persons age 25+, 2007-2011	29.6%	36.1%
Veterans, 2007-2011	2,034	443,652
Mean travel time to work (minutes), workers age 16+, 2007-2011	28.1	31.7

Housing units, 2011	10,606	2,391,350

Homeownership rate, 2007-2011	74.7%	68.7%
Housing units in multi-unit structures, percent, 2007-2011	11.9%	25.4%
Median value of owner-occupied housing units, 2007-2011	\$272,900	\$319,800
Households, 2007-2011	7,605	2,128,377
Persons per household, 2007-2011	2.44	2.63
Per capita money income in the past 12 months (2011 dollars), 2007-2011	\$31,691	\$35,751
Median household income, 2007-2011	\$53,480	\$72,419
Persons below poverty level, percent, 2007-2011	12.7%	9.0%

Business QuickFacts	Kent County	Maryland
Private nonfarm establishments, 2010	660	134,579 ¹
Private nonfarm employment, 2010	6,739	2,075,507 ¹
Private nonfarm employment, percent change, 2000-2010	-4.0	0.8 ¹
Nonemployer establishments, 2010	1,782	424,163

Total number of firms, 2007	2,694	528,112
Black-owned firms, percent, 2007	S	19.3%
American Indian- and Alaska Native-owned firms, percent, 2007	S	0.6%
Asian-owned firms, percent, 2007	F	6.8%
Native Hawaiian and Other Pacific Islander-owned firms, percent, 2007	F	0.1%
Hispanic-owned firms, percent, 2007	F	4.9%
Women-owned firms, percent, 2007	25.5%	32.6%

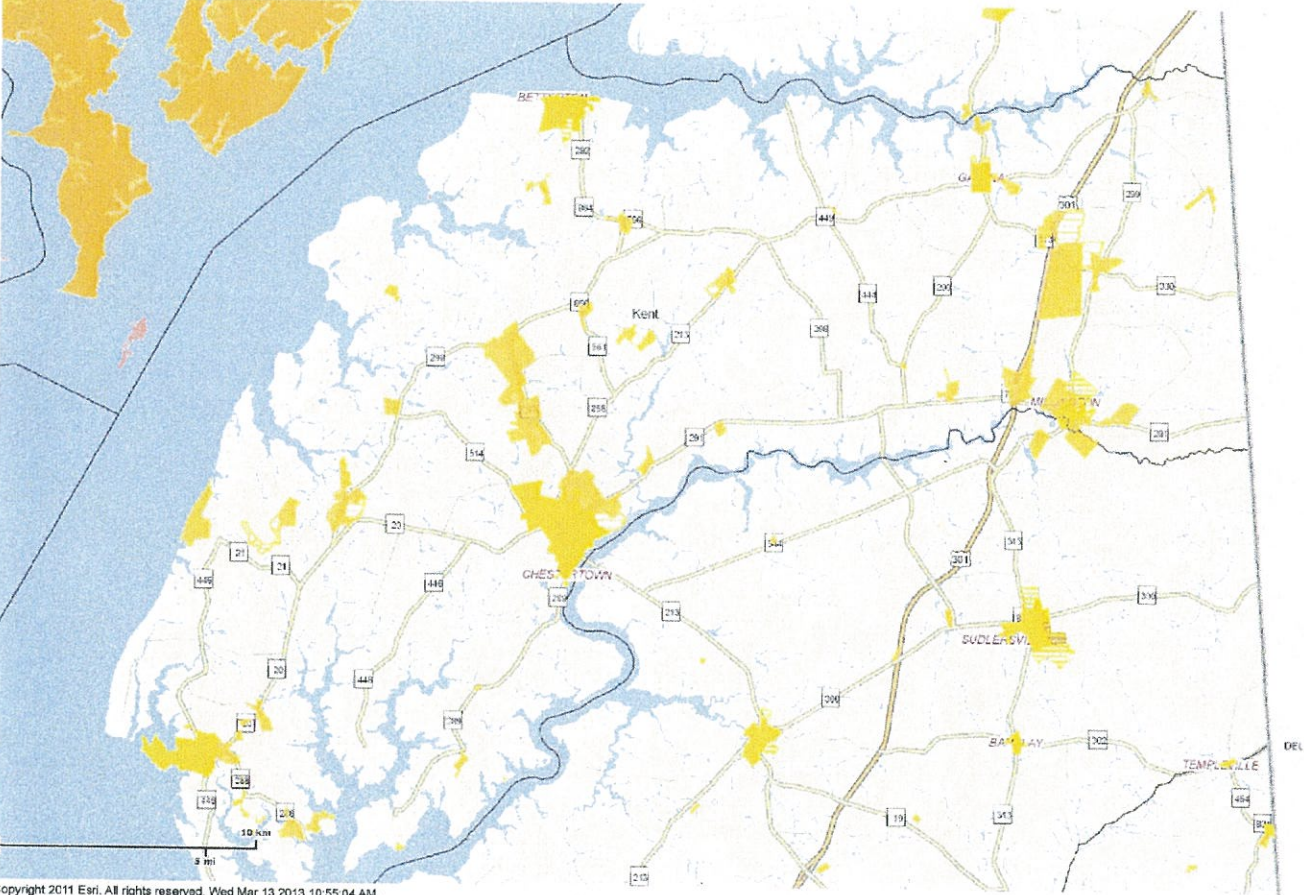
Manufacturers shipments, 2007 (\$1000)	290,197	41,456,097
Merchant wholesaler sales, 2007 (\$1000)	D	51,276,797
Retail sales, 2007 (\$1000)	197,080	75,664,186
Retail sales per capita, 2007	\$9,917	\$13,429
Accommodation and food services sales, 2007 (\$1000)	36,003	10,758,428
Building permits, 2011	46	13,481

Geography QuickFacts	Kent County	Maryland
Land area in square miles, 2010	277.03	9,707.24
Persons per square mile, 2010	72.9	594.8
FIPS Code	029	24
Metropolitan or Micropolitan Statistical Area	None	

1: Includes data not distributed by county.

My Map

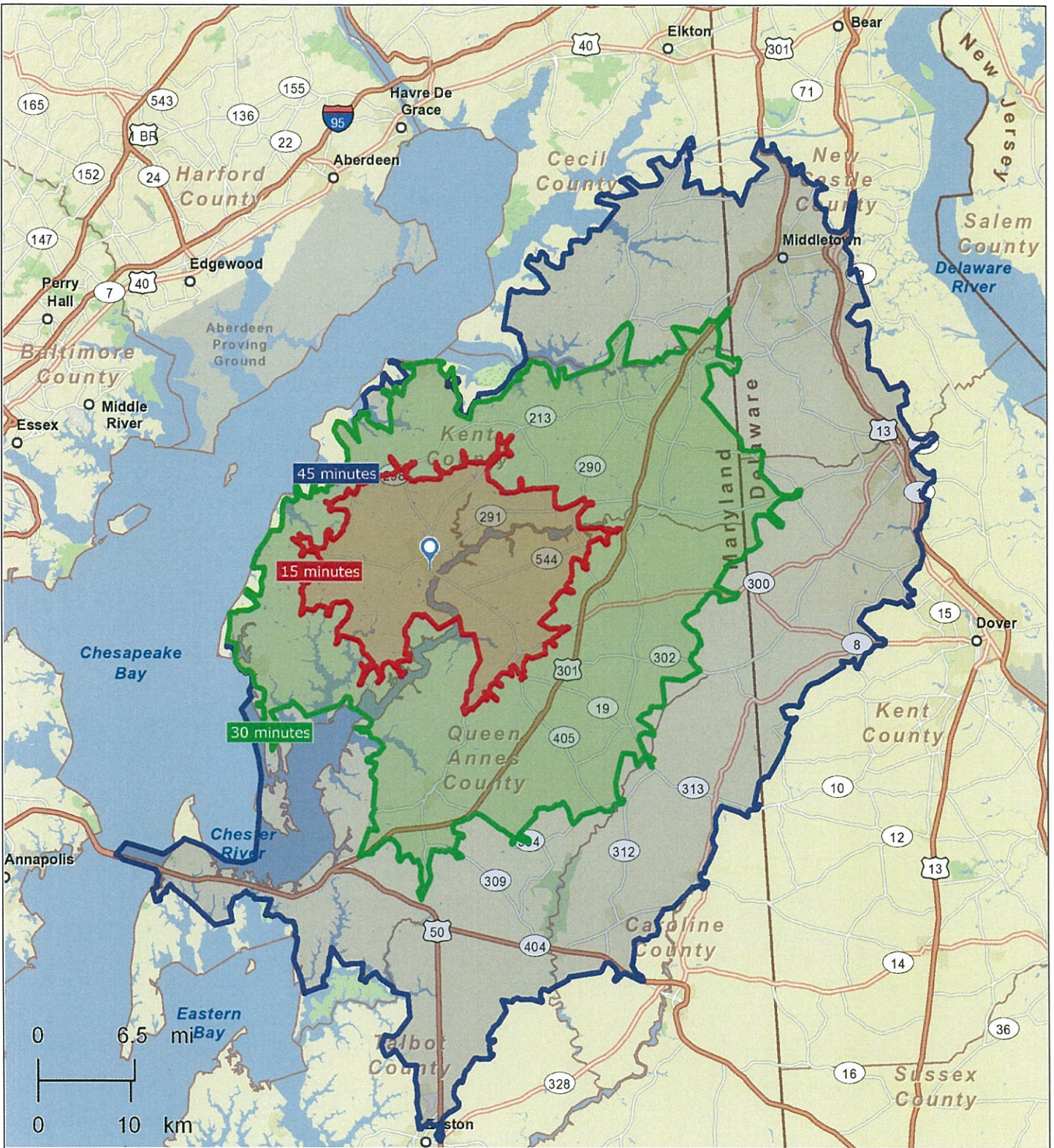
Kent PFA Chart



Copyright 2011 Esri. All rights reserved. Wed Mar 13 2013 10:55:04 AM.

Kent County Maryland Potential Labor Pool

	← ChesterTown →				
	15 Minute	30 Minute	45 Minute	60 Minute	45 Min.
Population	13,823	38,178	149,053	536,394	Millington
Households	5,423	14,740	54,418	198,204	443,253
Avg HH income a/o 2012	\$68,914	\$71,585	\$75,862	\$79,488	161,130
Median age	42.4	42.9	39.1	37.6	74,262
					36.2
Population by Age Group					
0 - 19	23.6%	24.7%	28.1%	27.4%	27.8%
20 - 54	43.1%	43.5%	46.0%	48.3%	49.3%
55 - 64	12.8%	13.4%	11.9%	11.2%	11.1%
65+	20.4%	18.4%	14.1%	12.5%	11.7%
HH Income <\$25,000	21.3%	20.8%	18.8%	17.3%	18.3%
HH income \$25,000 - \$49,999	25.7%	23.5%	22.2%	20.7%	22.2%
HH income \$50,000 - \$99,999	30.2%	32.7%	34.4%	34.8%	35.4%
HH income \$100,000 - \$149,999	16.3%	14.5%	15.3%	17.2%	16.1%
HH income > \$150,00	6.6%	8.4%	9.4%	9.9%	7.9%



	Historical					Projected					
	1970	1980	1990	2000	2010*	2015	2020	2025	2030	2035	2040
Population Characteristics:											
Total Population	16,146	16,695	17,842	19,197	20,200	20,700	21,500	22,200	22,700	23,150	23,600
Male	7,858	8,026	8,615	9,192	9,640	9,860	10,190	10,490	10,680	10,840	10,980
Female	8,288	8,669	9,227	10,005	10,560	10,850	11,310	11,710	12,030	12,320	12,620
White **											
White **	12,158	12,895	14,199	15,553	16,170	16,530	17,110	17,610	17,960	18,260	18,550
Nonwhite **	3,988	3,800	3,643	3,644	4,030	4,180	4,390	4,590	4,750	4,900	5,050
Selected Age Groups:											
0-4	1,169	948	1,140	888	1,000	900	900	910	910	930	970
5-19	4,751	3,890	3,429	3,809	3,440	3,470	3,520	3,480	3,420	3,450	3,500
20-44	4,762	5,626	6,354	5,937	5,500	5,350	5,370	5,490	5,490	5,290	5,350
45-64	3,347	3,704	3,927	4,855	5,870	5,890	5,810	5,360	5,050	5,240	5,480
65+	2,117	2,527	2,992	3,708	4,400	5,100	5,900	6,960	7,830	8,240	8,300
Total	16,146	16,695	17,842	19,197	20,200	20,700	21,500	22,200	22,700	23,150	23,600
Total Household Population	15,440	16,060	16,714	17,849	18,671	19,136	19,969	20,662	21,109	21,469	21,873
Total Households	5,109	6,133	6,702	7,666	8,175	8,500	9,025	9,525	9,900	10,150	10,375
Average Household Size	3.02	2.62	2.49	2.33	2.29	2.25	2.21	2.17	2.13	2.11	2.11
Labor Force:											
Total Population 16+	11,525	13,264	14,467	15,657	17,080	17,570	18,370	19,150	19,650	20,060	20,430
In Labor Force	6,727	7,707	9,197	9,733	10,240	10,320	10,510	10,540	10,550	10,610	10,770
% in Labor Force *	58.4	58.1	63.6	62.2	59.9	58.7	57.2	55.0	53.7	52.9	52.7
Male Population 16+	5,551	6,300	6,911	7,362	8,050	8,300	8,680	9,020	9,210	9,340	9,450
In Labor Force	4,176	4,367	4,937	5,003	5,140	5,210	5,330	5,380	5,360	5,370	5,420
% in Labor Force *	75.2	69.3	71.4	68.0	63.9	62.8	61.4	59.6	58.2	57.5	57.4
Female Population 16+	5,974	6,964	7,556	8,295	9,040	9,270	9,690	10,130	10,440	10,720	10,980
In Labor Force	2,551	3,340	4,260	4,730	5,100	5,110	5,180	5,160	5,190	5,240	5,350
% in Labor Force *	42.7	48.0	56.4	57.0	56.4	55.1	53.5	50.9	49.7	48.9	48.7
Jobs by Place of Work :											
	7,303	8,066	10,269	11,603	12,474	13,500	14,000	14,500	15,000	15,200	16,000
Personal Income :											
Total (million of constant 2005\$)	\$256.0	\$300.5	\$475.1	\$665.7	\$812.0	\$963.1	\$1,114.9	\$1,231.4	\$1,332.0	\$1,430.5	\$1,541.9
Per Capita (constant 2005\$)	\$15,754	\$17,986	\$26,590	\$34,579	\$40,192	\$46,528	\$51,858	\$55,467	\$58,678	\$61,791	\$65,536

** For 2000 to 2040 white population is equal to "white alone", and non-white population is equal to "all other races".

* Labor force participation rates for 2010 are estimates based on the 2008-2010 American Community Survey. These participation rates are applied to the Census 2010 population by age/sex to yield labor force estimates.

SOURCE: Projections prepared by the Maryland Department of Planning, May 2012. Population and household data from 1970 thru 2010 are from the U.S. Census Bureau, as is the labor force data from 1970 thru 2000. Labor force participation rate data for 2010 is an estimate by the Maryland Department of Planning based on 2008-2010 American Community Survey data. 1990 race and sex population is from modified age, race, sex data (MAARS) and 2000 race and sex population from modified race data, both from the U.S. Census Bureau. Historical jobs, total personal income and per capita personal income data are from the U.S. Bureau of Economic Analysis.

Projections are rounded, therefore numbers may not add to totals.

	Historical					Projected					
	1970	1980	1990	2000	2010*	2015	2020	2025	2030	2035	2040
Population Characteristics:											
Total Population	3,922,399	4,216,975	4,780,753	5,296,486	5,773,550	5,962,010	6,216,160	6,428,240	6,611,900	6,753,000	6,861,900
Male	1,916,030	2,042,810	2,318,291	2,557,794	2,791,760	2,887,560	3,015,050	3,121,600	3,214,760	3,288,780	3,349,460
Female	2,006,369	2,174,165	2,462,462	2,738,692	2,981,790	3,074,450	3,201,100	3,306,640	3,397,150	3,464,210	3,512,430
White **	3,193,021	3,158,838	3,430,055	3,493,504	3,359,280	3,320,250	3,311,920	3,264,620	3,206,350	3,119,190	3,011,960
Nonwhite **	729,378	1,058,137	1,350,698	1,802,982	2,414,270	2,641,760	2,904,230	3,163,620	3,405,550	3,633,800	3,849,930
Selected Age Groups:											
0-4	344,573	272,274	364,988	353,393	364,490	374,770	384,740	390,320	395,740	397,600	398,140
5-19	1,170,508	1,054,505	940,288	1,139,572	1,152,140	1,143,020	1,173,480	1,201,040	1,225,990	1,244,600	1,256,610
20-44	1,321,781	1,645,037	2,046,144	1,978,806	1,951,310	1,952,570	2,019,820	2,089,280	2,126,950	2,151,740	2,167,460
45-64	785,840	849,550	914,989	1,225,408	1,597,970	1,651,140	1,637,290	1,571,970	1,534,790	1,554,680	1,621,050
65+	299,697	395,609	514,344	599,307	707,640	840,520	1,000,830	1,175,660	1,328,430	1,404,380	1,418,640
Total	3,922,399	4,216,975	4,780,753	5,296,486	5,773,550	5,962,010	6,216,160	6,428,240	6,611,900	6,753,000	6,861,900
Total Household Population	3,817,618	4,122,547	4,666,897	5,162,430	5,635,177	5,817,347	6,065,616	6,269,403	6,442,332	6,572,276	6,671,929
Total Households	1,174,933	1,460,865	1,748,991	1,980,859	2,156,425	2,250,050	2,371,750	2,478,225	2,567,050	2,636,325	2,687,375
Average Household Size	3.25	2.82	2.67	2.61	2.61	2.59	2.56	2.53	2.51	2.49	2.48
Labor Force:											
Total Population 16+	2,686,051	3,214,000	3,736,830	4,085,942	4,584,110	4,761,900	4,981,400	5,166,600	5,327,830	5,454,670	5,555,560
In Labor Force	1,655,695	2,108,296	2,639,896	2,769,525	3,193,690	3,268,680	3,354,540	3,410,600	3,458,320	3,506,830	3,567,570
% In Labor Force *	61.6	65.6	70.6	67.8	69.7	68.6	67.3	66.0	64.9	64.3	64.2
Male Population 16+	1,288,239	1,530,675	1,783,061	1,993,130	2,185,340	2,275,160	2,384,140	2,476,400	2,558,140	2,624,890	2,681,370
In Labor Force	1,035,929	1,188,276	1,401,893	1,418,491	1,617,900	1,655,850	1,700,390	1,734,290	1,767,030	1,801,110	1,840,780
% In Labor Force *	80.4	77.6	78.6	73.3	74.0	72.8	71.3	70.0	69.1	68.6	68.7
Female Population 16+	1,397,812	1,683,325	1,953,769	2,150,812	2,398,770	2,486,740	2,597,260	2,690,200	2,769,690	2,829,780	2,874,190
In Labor Force	619,766	920,020	1,238,003	1,351,034	1,575,790	1,612,830	1,654,150	1,676,310	1,691,290	1,705,720	1,726,790
% In Labor Force *	44.3	54.7	63.4	62.8	65.7	64.9	63.7	62.3	61.1	60.3	60.1
Jobs by Place of Work :											
	1,702,298	2,070,441	2,737,249	3,065,202	3,364,818	3,573,900	3,764,800	3,876,100	3,959,800	4,038,500	4,127,900
Personal Income :											
Total (million of constant 2005\$)	\$75,799.6	#####	\$150,824.2	\$205,052.2	\$255,268.5	\$292,186.3	\$334,133.7	\$362,781.4	\$387,646.8	\$410,230.7	\$434,021.0
Per Capita (constant 2005\$)	\$19,245	\$23,924	\$31,423	\$38,609	\$44,121	\$49,008	\$53,753	\$56,435	\$58,629	\$60,748	\$63,251

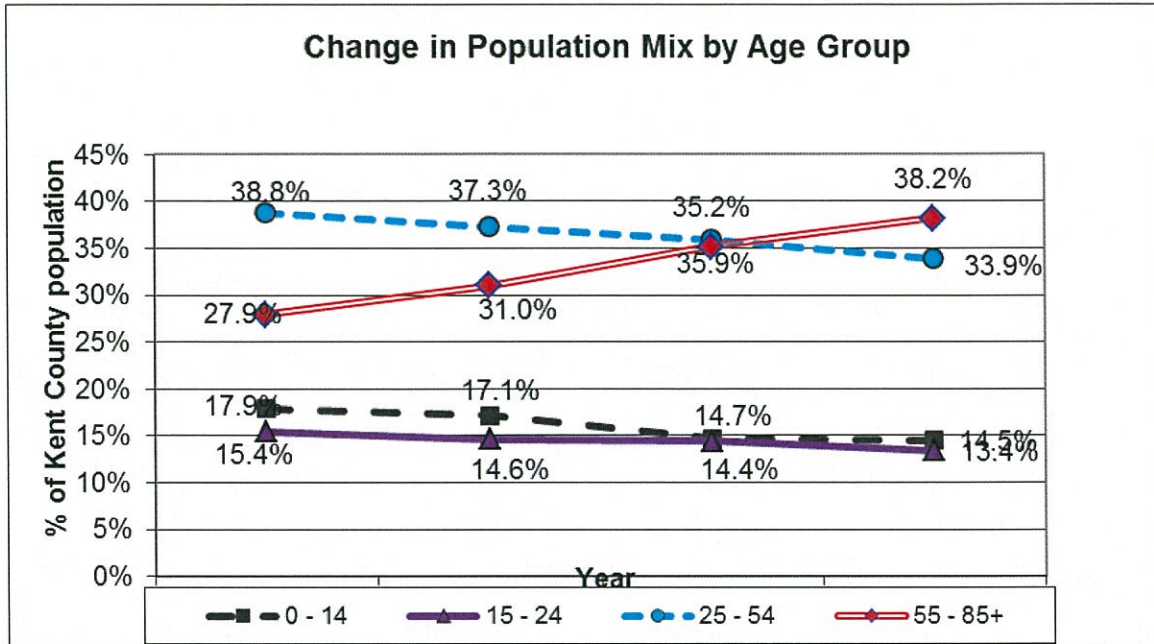
** For 2000 to 2040 white population is equal to "white alone", and non-white population is equal to "all other races".

* Labor force participation rates for 2010 are estimates based on the 2008-2010 American Community Survey. These participation rates are applied to the Census 2010 population by age/sex to yield labor force estimates.

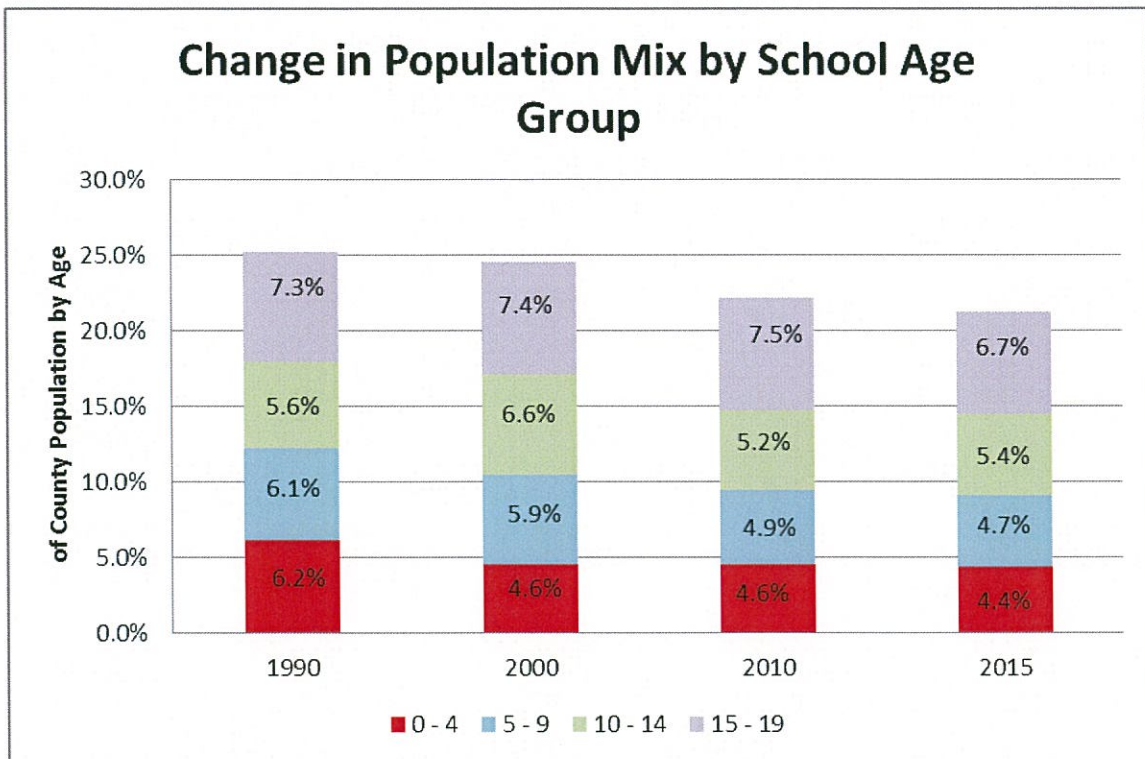
SOURCE: Projections prepared by the Maryland Department of Planning, May 2012. Population and household data from 1970 thru 2010 are from the U.S. Census Bureau, as is the labor force data from 1970 thru 2000. Labor force participation rate data for 2010 is an estimate by the Maryland Department of Planning based on 2008-2010 American Community Survey data. 1990 race and sex population is from modified age, race, sex data (MARS) and 2000 race and sex population from modified race data, both from the U.S. Census Bureau. Historical jobs, total personal income and per capita personal income data are from the U.S. Bureau of Economic Analysis.

Projections are rounded, therefore numbers may not add to totals.

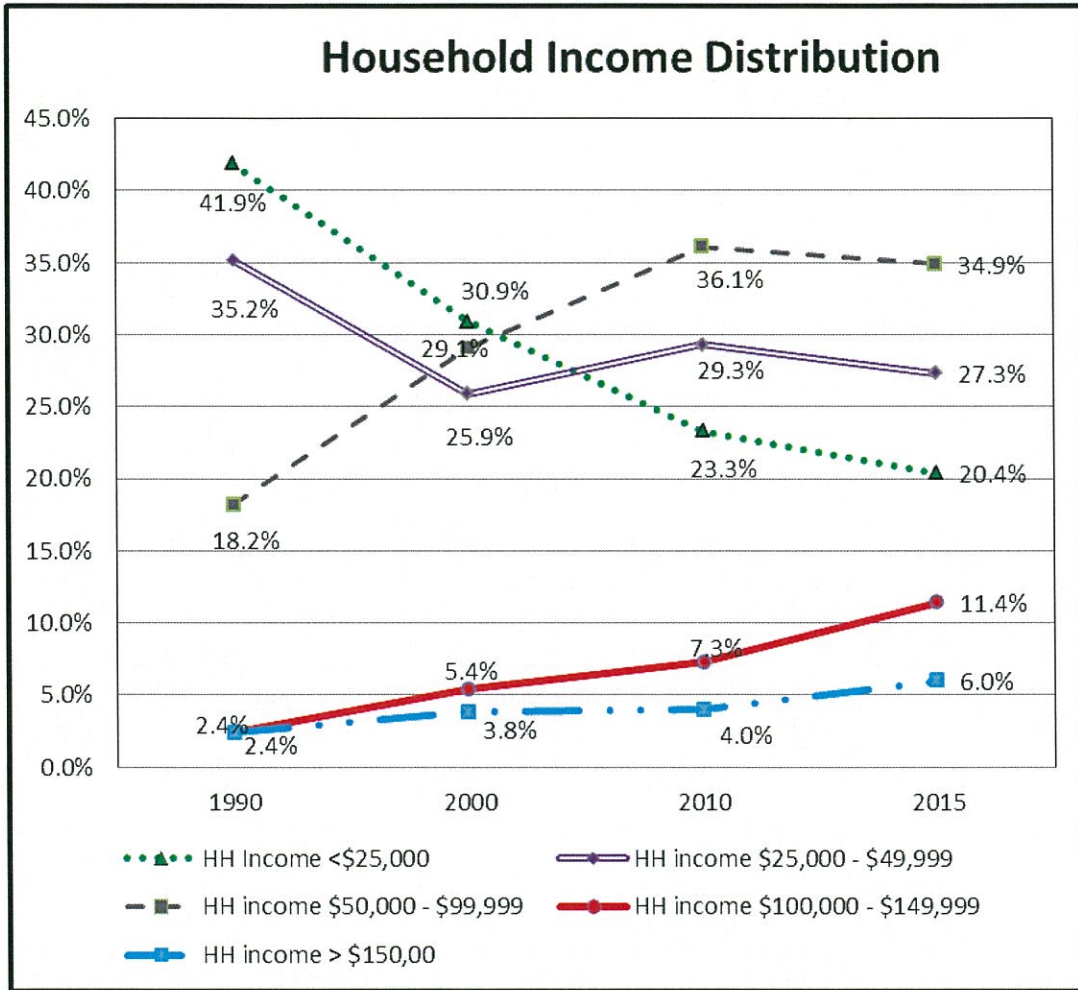
Kent County 2010 Demographics



Kent County 2010 Demographics



Kent County 2010 Demographics



Kent County 2010 Demographics

	1990	2000	2010	2015
Population	17,842	19,197	20,906	21,392
% change		7.6%	8.9%	2.3%
Households	6,702	7,666	8,508	8,763
% change		14.4%	11.0%	3.0%
Per Capita income	\$15,498	\$21,573	\$25,486	\$29,416
% change		39.2%	18.1%	15.4%
Median age	36.6	41.2	45.1	46.1
Population by Age Group				
0 - 14	17.9%	17.1%	14.7%	14.5%
15 - 24	15.4%	14.6%	14.4%	13.4%
25 - 54	38.8%	37.3%	35.9%	33.9%
55 - 85+	27.9%	31.0%	35.2%	38.2%
Population by School Age Group				
0 - 4	6.2%	4.6%	4.6%	4.4%
5 - 9	6.1%	5.9%	4.9%	4.7%
10 - 14	5.6%	6.6%	5.2%	5.4%
15 - 19	7.3%	7.4%	7.5%	6.7%
# housing units	8,181	9,410	10,886	11,355
# of households	6,702	7,666	8,508	8,763
Owner occupied	4,797	5,395	5,949	6,130
Owner occupied %	58.6%	57.3%	54.6%	54.0%
Vacant or 2nd homes	18.1%	18.5%	21.8%	22.8%

Mortgage status a/o 2009

Owner occupied Homes with mortgage	60.6%
Owner occupied Homes with no mortgage	39.4%

NOTE: Housing unit: detached house, apartment building with no business on site, mobile home.

Kent County 2010 Demographics

Ethnicity	1990	2000	2010	2015
White	78.2%	79.6%	77.5%	76.6%
Black	19.8%	17.4%	18.0%	18.3%
Hispanic	1.7%	2.8%	3.5%	4.1%
Asian	0.4%	0.5%	0.7%	0.9%
Other	0.1%	0.1%	0.1%	0.1%

Employment Status	2000	2010
In Labor Force	63.6%	62.2%
Not in Labor Force	36.4%	37.8%
Work in County of residence	73.5%	72.0%
Work outside of County of residence	15.4%	16.0%
Work outside of State of residence	11.1%	12.0%
Work at home	6.0%	4.7%
Walk to work	9.2%	7.9%
Drive alone	65.1%	73.5%
Car pool	17.8%	11.4%

Kent County 2010 Demographics

	1990	2000	2010	2015
Avg HH income	\$40,491	\$52,555	\$59,474	\$68,331
% change		29.8%	13.2%	14.9%
HH below poverty level per USDA 2009 survey	12.2%	11.6%	14.4%	
HH Income <\$25,000	41.9%	30.9%	23.3%	20.4%
HH income \$25,000 - \$49,999	35.2%	25.9%	29.3%	27.3%
HH income \$50,000 - \$99,999	18.2%	29.1%	36.1%	34.9%
HH income \$100,000 - \$149,999	2.4%	5.4%	7.3%	11.4%
HH income > \$150,00	2.4%	3.8%	4.0%	6.0%

Educational attainment (age 25+) a/o 2009		
< 10th grade	7.5%	
<12th grade	7.7%	15.2%
High school or GED	33.3%	
Some college	16.1%	
Associate's Degree	5.1%	
Bachelor's Degree	18.1%	
Master's Degree	8.0%	
Professional or Doctorate Degree	4.1%	35.3%

Kent County 2010 Demographics

Employment by Industry a/o 2009

Agriculture, fishing, hunting	8.1%
Construction	9.6%
Manufacturing	7.1%
Wholesale/Retail trade	11.2%
Transportation/Warehousing	3.6%
Professional, scientific, technical svcs	7.1%
Finance, Real Estate, Insurance	5.7%
Waste management	2.9%
Educational Services	13.1%
Health Care, Social Services	11.1%
Arts, Entertainment, Recreation	2.8%
Accomodation, Food Services	8.7%
Public Administration	4.3%
Other Services	4.8%

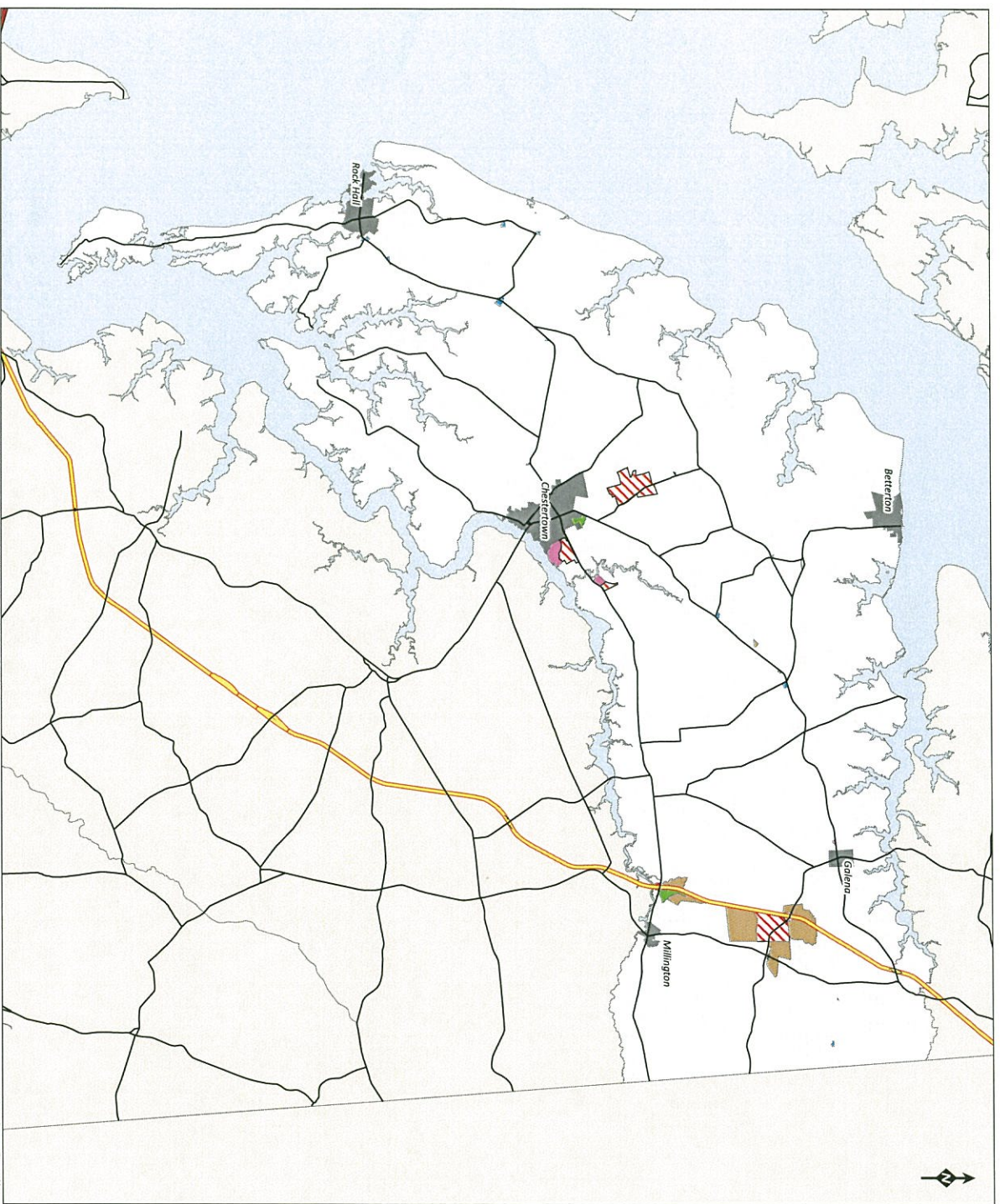
Kent County Consumer Spending Profiles

KENT COUNTY			
CATEGORY	Total \$	HH AVG	Index
Apparel & Services	\$ 11,562,798	\$1,359	57
Computers & Accessories	\$ 1,367,214	\$161	84
Education	\$ 8,127,474	\$955	78
Entertainment & Recreation	\$ 25,031,092	\$2,942	91
Food at home	\$ 56,760,602	\$6,671	87
Food away from home	\$ 22,904,571	\$2,692	84
Health care	\$ 31,803,586	\$3,738	100
Health insurance	\$ 16,534,495	\$1,943	101
Home Furnishings	\$ 13,281,694	\$1,561	76
Household Operations	\$ 12,072,841	\$1,419	87
Investments	\$ 15,768,945	\$1,853	107
Insurance	\$ 15,881,626	\$1,867	93
Pets	\$ 1,076,010	\$126	87
Retail goods	\$ 184,081,229	\$21,636	87
Shelter	\$ 104,258,850	\$12,254	78
TV/Video/Audio	\$ 9,077,940	\$1,067	86
Transportation	\$ 64,090,902	\$7,533	91
Travel	\$ 13,473,360	\$1,584	84
Vehicle Maintenance	\$ 7,138,051	\$839	89
AVERAGE		\$72,202	87

Kent County Comparison 2010 Demographics

	KENT COUNTY	QA COUNTY	EASTERN SHORE	STATE
% change in population since 2000	8.9%	20.6%	13.2%	8.7%
% change in # of households since 2000	11.0%	21.6%	14.2%	8.0%
Avg HH income	\$59,474	\$80,855	\$60,800	\$83,182
HH below poverty level in 2009	14.4%	7.3%	10.5%	7.9%
% of adults 25+ not having completed HS	15.2%	11.0%	14.2%	11.7%
Owner occupied HH with no mortgage	39.4%	24.4%	21.9%	23.0%
Median age	45.1	42.1	42.3	38.3
Avg HH Consumer spending	\$72,202	\$92,530	\$70,176	\$93,887
Avg HH Consumer spending index	87	116	88	118

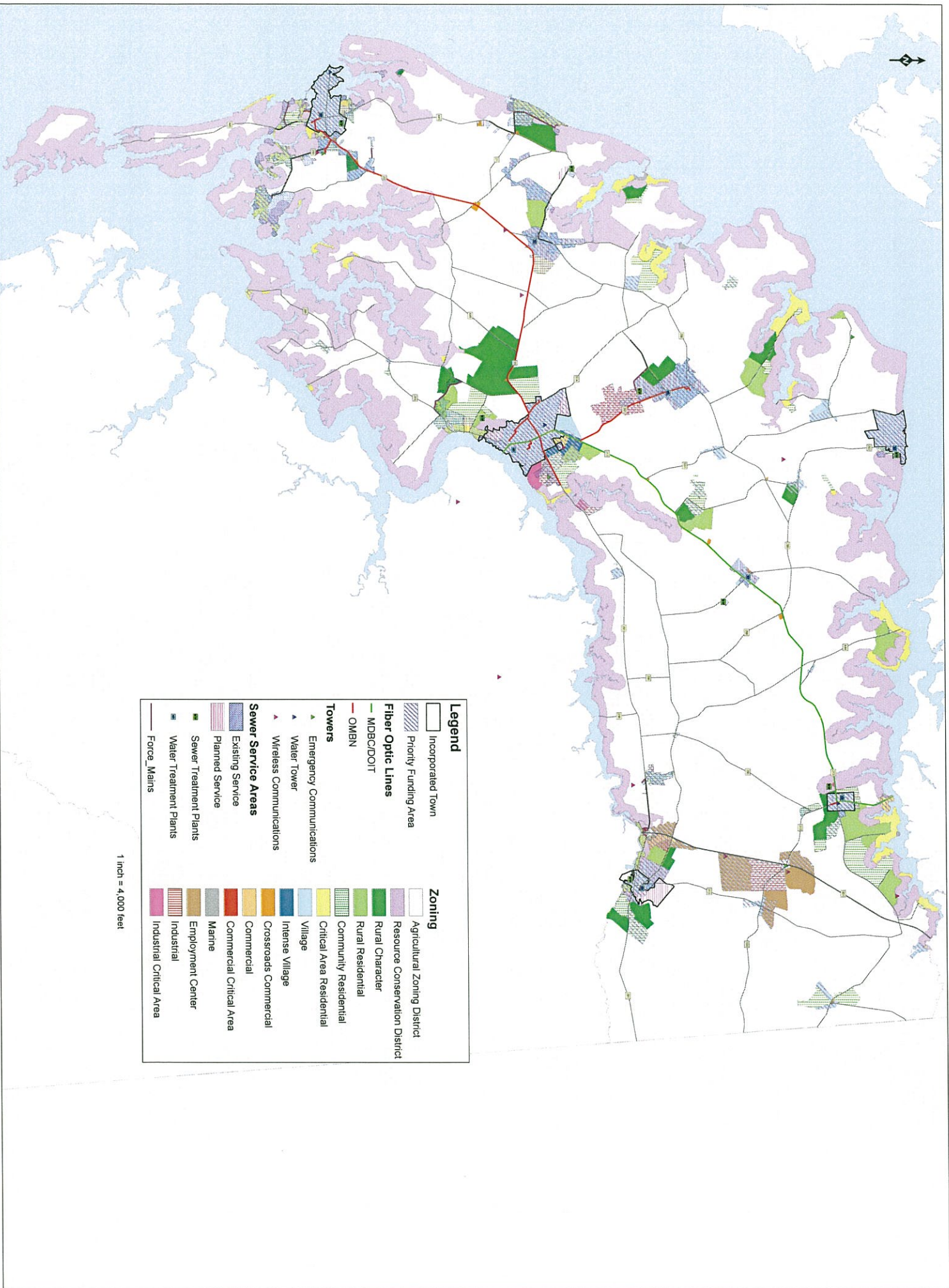
Kent County, Maryland



Source: Kent County Department of Planning, Housing and Zoning, MdProperty View 2011. Map prepared August 2013.

1 inch = 3 miles

- Legend**
- ZONING**
- CC, Crossroads Commercial
 - CCA, Commercial Critical Area
 - C, Commercial
 - EC, Employment Center
 - I, Industrial
 - ICA, Industrial Critical Area
 - Incorporated Town



Legend

	Incorporated Town		Zoning
	Priority Funding Area		Agricultural Zoning District
	Fiber Optic Lines		Resource Conservation District
	MDBC/DOIT		Rural Character
	OMBN		Rural Residential
	Towers		Community Residential
	Emergency Communications		Critical Area Residential
	Water Tower		Village
	Wireless Communications		Intense Village
	Sewer Service Areas		Crossroads Commercial
	Existing Service		Commercial
	Planned Service		Commercial Critical Area
	Sewer Treatment Plants		Marine
	Water Treatment Plants		Employment Center
	Force Mains		Industrial
			Industrial Critical Area

1 inch = 4,000 feet

