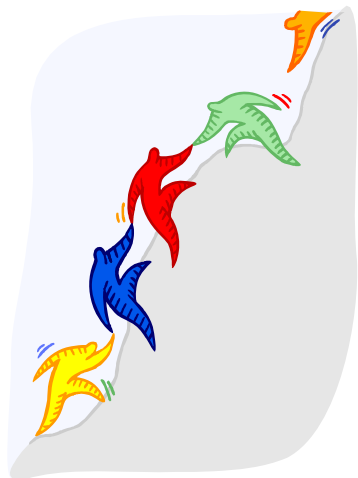


HOW DO I GET TO THE IAC OR LCC?

Your child may be referred to the IAC by self-referral or agency referral. If you notice that your child is having behavioral, developmental, or emotional issues, talk to their doctor, therapist, guidance counselor, or a representative from any of the IAC/LCC key partners about making a referral. For a self-referral, contact Diane Lane, Family Navigator with the Maryland Coalition of Families for Children's Mental Health at 443-480-2966. You can also contact Rebecca Lepter, LCC Specialist at the Local Management Board at 410-810-2673 for more information.

If your child is already involved with a child-serving agency in Kent County and has been recommended for an out-of-home placement, you can ask them about a referral to the LCC for intensive, community-based services.



EXAMPLES OF SITUATIONS AND WHICH MEETING WOULD BEST HELP

Your family is having difficulty managing a crisis and has not found help.

Inter-Agency Committee

A family with a child or children who need the services of two or more of the child serving agencies listed as key partners.

Inter-Agency Committee

A child who has had multiple psychiatric hospitalizations in a short period of time without a successful transition back into the community.

Inter-Agency Committee and then to Local Coordinating Council, if unresolved.

A child who has been recommended for 'RTC' (Residential Treatment Center) placement by an agency or treating professional.

Local Coordinating Council

The Maryland Coalition of Families for Children's Mental Health employs a family advocate to provide support to parents on the Mid-Shore.

For more information, please call:

Diane Lane, Family Navigator

903 Washington Ave., Suite 4

Chestertown, MD 21620

Phone: 443-480-2966

Fax: 410-810-2674

E-mail: dlane@mdcoalition.org

Kent County IAC / LCC

What the letters stand for and how they can help your child.



Local Management Board for Children's & Family Services of Kent County

Candy Edwards, Director
903 Washington Avenue, Suite 4
Chestertown, MD 21620

Phone: 410-810-2673

Fax: 410-810-2674

E-mail: cedwards@kentgov.org

WHAT YOU NEED TO KNOW ABOUT THE...

Inter-Agency Committee

The Inter-Agency Committee (IAC) exists to find and use resources already available in the community to help your child. This committee consists of “front-line” workers from local child-serving agencies, the Local Management Board (LMB), and a Family Navigator. As the parent you are the most important member of the team because you know your child the best.

The IAC accepts referrals from the local School System, Department of Social Services, Department of Juvenile Services, Mental Health Providers, Health Department, Parents and others.

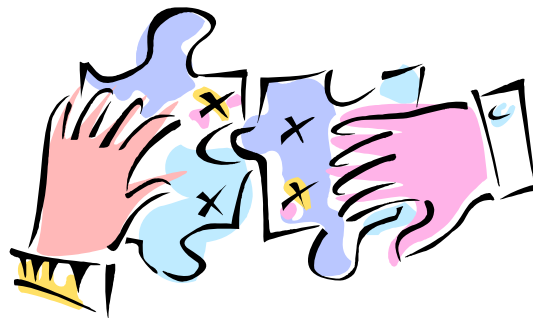
Monthly Meetings are scheduled to:

- Accept referrals of families with children having multiple needs.
- Develop a community plan of care for children with multiple needs that includes the family in the planning process.
- Help the agency mainly responsible for the child’s care to put services into place and ensure that things are getting done.
- For children who need more intensive services, the case will be referred to the Local Coordinating Council.



KEY PARTNERS IN IAC & LCC

Health Department
Department of Social Services
Department of Juvenile Services
Developmental Disabilities Administration
Core Service Agency
Kent County Public Schools
Division of Rehabilitation Services
Kent County Behavioral Health
Family Navigator
Local Management Board



For more information about the Local Management Board please visit our web site: www.kentcounty.com/lmb

WHAT YOU NEED TO KNOW ABOUT THE...

Local Coordinating Council

The Local Coordinating Council (LCC) oversees services to children who have been recommended for a residential level of care. The Council consists of representatives from local child-serving agencies in Kent County, the Local Management Board, and a Family Navigator. As with the IAC, you as the parent are the most important member of the team because you know your child the best.

The purpose of the LCC is to serve children with intensive needs in the least restrictive environment. The LCC makes recommendations for plans of care, including placement and level of care, with the ultimate goal of finding services and supports to keep youth in their home and community.

If the child has been determined to be eligible by the LCC that they can be served successfully with community-based services, the LCC will recommend that the LMB fund Community Services Initiative (CSI) or Rehabilitation Option (Rehab Op) services for your child and begin a Plan of Care. A case manager will be assigned to coordinate child-centered and family driven services. The LCC will meet to review and monitor the child’s Plan of Care for the duration of funding. Families will be included in all LCC reviews.